
AUTOMATIC SEISMIC PROCEDURE IN DEEPXCAV

1 AUTOMATIC SEISMIC PROCEDURE IN PARATIE PLUS / DEEPXCAV

Simple design formulations for the pseudo-static design of earth retaining structures are only available for two opposite wall behaviours.

In **very flexible** wall design, various methods based on limit analysis concepts are available, assuming that the all the soil interacting with the wall is essentially in yielding limits conditions, i.e. in a plastic state. Among such approaches, the most widely use is the M-O method, which, while, is conceptually applicable to both active and passive limit state conditions, it is actually employed just for the active seismic thrust estimate. As for seismic passive resistance, other approaches such as Chen e Liu (1990), Soubra (2000) methods and recent simple and safe formulation by Lancellotta (2007) are used.

On the opposite side, in **very rigid** wall design, soil interacting with the wall is currently assumed to be very far from some yielding state, even during seismic event. In such conditions, seismic soil thrusts are essentially computed based on “elastic” methods, among which the most widely adopted one is the Wood (1973) method, which is also included in Eurocode 8 , Part 5 recommendations. Recently, several alternatives have been proposed, aiming at improving the Wood method: reference can be made to the works by Wu & Finn (1999) and Veletsos & Younan (Veletsos & Younan (1994a), (1994b), (1997)), in which more general yet quite more complex analytical solutions are included.

The seismic thrust increment ΔP_E , due to an uniform pseudo-static horizontal acceleration k_h on a wall whose height is H , from a homogeneous dry soil backfill, with unit weight γ and a friction angle ϕ , assuming a wall-soil friction angle δ equal to $\frac{1}{2}\phi$ is given by the following equations:

$$\frac{\Delta P_E}{\gamma H^2} \cong 0.375 \cdot k_h \quad \text{seismic active thrust increment, M-O method (Seed \& Whitman (1970))}$$

$$\frac{\Delta P_E}{\gamma H^2} = k_h \quad \text{seismic thrust increment, Wood method (independent from } \phi \text{ and } \delta \text{)}$$

Corresponding with the same horizontal acceleration k_h , the very rigid wall assumption according to the Wood method yields to a seismic thrust increment which is almost three times greater than the M-O thrust. Such difference may even grow up further if, in the estimate of the k_h value to be considered in the M-O, an additional reduction factor is included to account for wall ductility: for example, by taking a reduction factor $r=2$ corresponding with the maximum factor allowed by Eurocode 8, the ratio of Wood thrust on M-O may exceed 5.

In reality, based on general criteria, it's usually very complex to deem whether a retaining wall may be considered very rigid or very deformable: we may just assert that quite limited, yet non-zero deformations (around some thousandths of the wall height) are sufficient to recover active conditions in the retained soil, thus allowing the M-O equations for the thrust estimate. However , when the wall rigidity is somehow higher, an intermediate thrust estimate in between Wood and M-O values is currently more realistic: for example, the Greek Guide for seismic bridge design (Regulatory Guide E39/93 (1998)) suggests the following equations for such intermediate circumstances:

$$\frac{\Delta P_E}{\gamma H^2} \cong 0.75 \cdot k_h$$

E-F-G-H path: it represents an uphill soil region that reached active static conditions (pt.E) Initial rigid seismic stress increment is represented by E-F segment, corresponding with a temporary elastic reloading path. Subsequent elastic strain release is represented by F-G segment, whilst seismic plastic deformation development is associated to segment G-H

I-J-K path: an uphill soil element is represented, which was actually pushed rather than being released ($\Delta > 0$, point D): initial rigid seismic stress increment is then represented by I-B segment, whereas subsequent unloading is J-K

Active and passive limit seismic conditions are computed according to general criteria reported in the other relevant sections of this manual. However it should be noted that for partially submerged soil, at depth $z > z_w$, with $z_w =$ phreatic depth, active and passive seismic coefficients are computed based on the following equations:

$$K_{AE}^{equiv} = \frac{(1 \pm k_v) \{ K_{A,E}^d \cdot \sigma'_v(z_w) + K_{A,E}^w \cdot [\sigma'_v(z) - \sigma'_v(z_w)] \}}{\sigma'_v(z)}$$

$$K_{PE}^{equiv} = \frac{(1 \pm k_v) \{ K_{P,E}^d \cdot \sigma'_v(z_w) + K_{P,E}^w \cdot [\sigma'_v(z) - \sigma'_v(z_w)] \}}{\sigma'_v(z)}$$

where

$K_{A,E}^d$ = active thrust coefficient – dry soil

$K_{A,E}^w$ = active thrust coefficient – completely submerged soil

$K_{P,E}^d$ = passive thrust coefficient – dry soil

$K_{P,E}^w$ = passive thrust coefficient – completely submerged soil

Such values may be either directly specified by the User or internally computed. This special definition for partially submerged case is necessary to prevent unrealistic lateral pressure discontinuities at the phreatic depth as well as to recover a correct overall resultant value.

A dynamic excess pore pressure coefficient r_u can be assigned, as the ratio of the pore pressure increment u_e to the effective vertical pressure. In this case, $\sigma'_v(z)$ at seismic step is computed by including u_e based on the effective vertical stress at previous step, i.e. $\sigma'_{v,0}(z)$. In other words, the following procedure is adopted:

$$\begin{cases} u_e(z) = r_u \cdot \sigma'_{v,0}(z) \\ u(z) = u_0(z) + u_e(z) \\ \sigma'_v(z) = \sigma'_v(z) - u(z) \end{cases}$$

Which is equivalent to:

$$\sigma'_v(z) = \sigma'_{v,0}(z) \cdot (1 - r_u)$$

It should be noted that the vertical effective stress decrease $\Delta \sigma'_v(z) = -r_u \cdot \sigma'_{v,0}(z)$ also induces a horizontal stress decrease, according to the standard solution procedure.

However, Westergaard hydrodynamic overpressures, if any, are not automatically included at all, but they must be explicitly added by the Users as external loadings.

Seismic inertia loading due to the wall mass should also be applied as external loadings.

If some clay layers exist that are modeled by the CLAY option, the automatic seismic procedure can be used only if undrained conditions are assigned for such soil layers: in such circumstances, the initial Wood pressures are added to total lateral stress components; therefore the pore pressures increments are computed according to the overall CLAY model procedures, exactly as in a static stage. **In current version, however, the automatic seismic procedure is not yet available if some CLAY elements exist.**

As for downhill soil elements, according to this automatic procedure, just the passive limit is redefined, taking into account the passive coefficient reduction due to seismic acceleration. Also for such elements, eventually Westergaard hydrodynamic effects should be applied as external loadings, in such a way to maximize instabilizing effects on the wall stability. In next figure, the overall procedure is summarized.

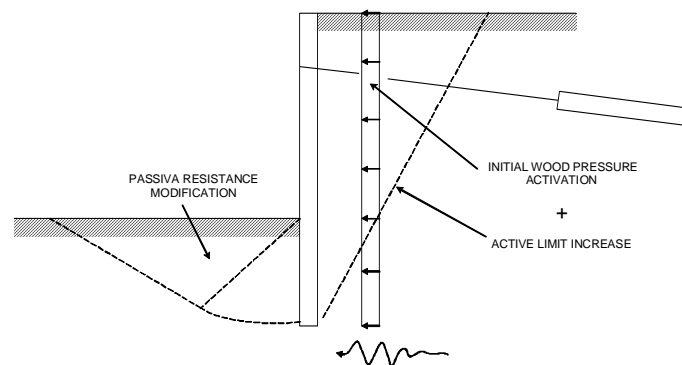


Figura 1-2: Automatic seismic procedure overview

It's worth noting that by this procedure all wall typologies may be analyzed without preliminary and arbitrary assumptions on their mechanical behavior: the algorithm will rationally select the actual wall response in between the two extreme assumptions; as for very flexible walls, the M-O seismic thrust is ensured at least, thus complying with most widely used design approaches. As for non-yielding wall in static conditions, by this method a seismic overstress is obtained as well.

The initial Wood stress release based toward final intermediate seismic pressure distribution is performed base on the static wall flexibility. However, the User is allowed to somehow tune the elastic response at this stage, by simply changing the initial soil stiffness.

At the moment, it is not possible to impose a position on the overall seismic resultant different form the static one.

It is highly recommended to activate the automatic seismic procedure at the last step the analysis, in a stage in which no other modifications are included in the model.

2 References

- A.G.I. (2005) –Associazione Geotecnica Italiana, *Aspetti Geotecnici della Progettazione in Zona Sismica- Linee Guida*, ed. Pàtron, Bologna - <http://www.associazionegeotecnica.it/~agi/>
- Anastasopoulos I., Gazetas G. & Psarropoulos P.N., (2004). On the seismic response of flexible retaining structures. *Proc. 11th Int. Conf. On Soil Dynamics and Earthquake Engineering – Proc. 3rd Int. Conf. On Earthquake Geotechnical Engineering*, 1, pp. 96-103.
- ANIDIS – SSN (1998): *Commentario al D.M. 16.1.1996 e alla Circ. n.65/AA.GG. del 10.4.1997 del Ministero LL.PP.*
- Boulanger R.W., Curras C. J., Kutter B. L., Wilson D. W., Abghari A. (1999), Seismic Soil-Pile-Structure Interaction Experiments And Analyses, *ASCE Journal of Geotechnical and Geoenvironmental Engineering*, Vol. 125, No. 9, pp. 750-759, September
- Bowles J.E. (1996) ,”*Foundation Analysis and design*”, 5th ed. McGraw-Hill
- Callisto L. (2006) , Pseudo-static seismic design of embedded retaining structures *ETC-12 Workshop* , Atene, January,<http://users.civil.ntua.gr/gbouck/gr/etc12/papers.html>
- Caquot A. & Kerisel J. (1948) “*Tables for the Calculation of Passive Pressure, Active Pressure and Bearing Capacity of Foundations*”, Gautiers-Villars, Paris
- Caquot A., Kerisel J., Absi E., (1973) “*Tables de butée et de poussée*”, Gautiers-Villars, Paris
- Castellani A. et al. (1981) *Costruzioni in Zona Sismica*, ed. Masson, Milano
- Ce.A.S. S.r.l., (2007), *PARATIE 7.0, Manuale di Riferimento*, Milano
- Chen, W.F., and Liu, X.L. (1990). “Limit analysis in soil mechanics”. *Developments in Geotechnical Engineering*, Vol. 52, Elsevier, Amsterdam.
- Coulomb C. A. (1773) *Essai sur une application des règles de Maximis et Minimis à quelques problèmes de statique relatifs à l'Architecture*. Académie Royale des Sciences
- DeAlba, P., Chan, C. K., and Seed, H. B. (1975), Determination of Soil Liquefaction characteristics by large-scale laboratory tests, Earthquake Engineering Research Center, *Report No. UCB/EERC-75/14*, University of California, Berkeley
- Ebeling Robert M. and Morrison, Ernest E. Jr. (1992), The Seismic Design of Waterfront Retaining Structures, *Technical Report ITL-92-11* , *NCEL TR-939*, U.S. Army Engineer Waterways Experiment Station, Vicksburg, Mississippi. (reperibile in internet, tramite una ricerca)
- Finn W. D. L. (2005), A Study of Piles during Earthquakes: Issues of Design and Analysis, *Bulletin of Earthquake Engineering*, vol. 3, pp.141–234
- Finn, W.D.L., Wu, G., and Ledbetter, R.H., (1994), Problems in seismic soil-structure interaction. *Proceedings of the 8th International Conference on Computer Methods and Advances in Geomechanics*, Morgantown, West Virginia, U.S.A., May 22-28, pp.139-152
- Kramer S. L. (1996) *Geotechnical Earthquake Engineering*, Prentice Hall
- Kumar J. (2001) Seismic passive earth pressure coefficients for sands, *Can. Geotech. J.* vol 38, pp. 876–881
- Idriss, I.M., and J.I. Sun, (1992), "User's Manual for SHAKE91" Department of Civil & Environmental Engineering, University of California, Davis, California, November.

- IS 1893 (1984), *Indian Standard Criteria for Earthquake Resistant Design of Structures*, Bureau of Indian Standards, New Delhi.
- Itasca (2002), *FLAC, Fast Lagrangian Analysis of Continua, Optional Features*, 2nd rev., Minneapolis, USA
- Lambe T.W. & Whitman R.V., (1969) “*Soil Mechanics*”, John Wiley & Sons, Inc.
- Lancellotta R., (1988) “*Geotecnica*”, Zanichelli
- Lancellotta R., (2007) “Lower-bound approach for seismic passive earth resistance”, *Géotechnique*, Vol. 57, No. 3, pp. 319-321
- Lysmer, J., T. Udaka, C.F. Tsai, and H.B. Seed, (1975) "FLUSH—A Computer Program for Approximate 3-D Analysis of Soil-Structure Interaction Problems," Earthquake Engineering Research Center, *Report No. UCB/EERC-75/30*, University of California, Berkeley, November.
- Marcuson, W. F. and Hynes, M. E. (1990), “Stability of Slopes and Embankments During Earthquakes”, *Proc. ASCE/Penn. DOT Geotechnical Seminar*, Hershey, Penn., April 10-11.
- Matsuzawa, H., Ishibashi, I., and Kawamura, M. (1985), "Dynamic Soil and Water Pressures of Submerged Soils," *Journal of Geotechnical Engineering*, ASCE, Vol. 111, No. 10, Oct., pp. 1161-1176.
- Mononobe, N., and Matsuo, H. (1929) On the determination of earth pressure during earthquakes. *Proceedings of World Engineering Conference*, Vol 9.
- Morrison, E.E., Jr., and Ebeling, R.M. (1995) Limit equilibrium computation of dynamic passive earth pressure. *Canadian Geotechnical Journal*, vol. 32, pp. 481-487
- NAVFAC (1986) “*Design Manual D.M 7.02 -Foundations and earth structures*”, USA
- Newmark N. (1965) Effects of earthquakes on dams and embankments, *Géotechnique* Vol. 15, No. 2, pp. 139-160
- Nova R. (2002) “*Fondamenti di meccanica delle Terre*” Ed. Mc Graw-Hill
- Nova R. (2006) Comunicazioni personali all’autore
- NT (1998) *Specification for Structures to be Built in Disaster Areas PART III - EARTHQUAKE DISASTER PREVENTION* Ministry of Public Works and Settlement Government of Republic of Turkey <http://www.koeri.boun.edu.tr/deprenmuh/FINEND-999.pdf>
- Okabe, S. (1926). General theory of earth pressure. *Journal, Japanese Society of Civil Engineers*, Vol. 12, No. 1
- Okamura M., Ishihara M., Tamura K. (2006), Liquefied Soil Pressures on Vertical Walls with Adjacent Embankments, *Soil Dynamics and Earthquake Engineering* Volume 26, Issues 2-4, 2006 Pages 265-274 (11th International Conference on Soil Dynamics and Earthquake Engineering (ICSDEE): Part II
- PHRI (Port and Harbour Research Institute) (1997). *Handbook on Liquefaction Remediation of Reclaimed Land*, A.A. Balkema, Brookfield, VT, 312 p.
- Psarropoulos P.N., Klonaris G., Gazetas G. (2005), Seismic earth pressures on rigid and flexible retaining walls *Soil Dynamics and Earthquake Engineering* vol. 25, pp. 795–809
- Rankine, W. (1857). On the Stability of Loose Earth, *Phil. Trans. Roy. Soc. London*, Vol. 147.
- Richards R., Elms D., (1979), Seismic behaviour of gravity retaining walls, *Journal of geotechnical Engineering Division*, ASCE, Vol. 105, No. GT4, pp. 449-464.
- Regulatory Guide E39/93 (1998) for the seismic analysis of bridges (Ministry of Public Works). Bulletin of Greek Technical Chamber; 1998, No.2040.

- Schnabel, P.B., J. Lysmer, and H.B. Seed, (1972), "SHAKE - A Computer Program for Earthquake Response Analysis of Horizontally Layered Sites," Earthquake Engineering Research Center, *Report No. UCB/EERC-72/12*. University of California, Berkeley, December
- Seed, H. B., and Whitman, R. V., (1970), Design of earth retaining structures for dynamic loads. *Proceedings of ASCE Special Conference on Lateral Stresses, Ground Displacement and Earth Retaining Structures*, Ithaca, N.Y., pp. 103 - 147.
- Simonelli A.L. (2004), Eurocodice 8: Valutazione delle azioni sismiche al suolo ed effetti sulla spinta dei terreni – *Rivista Italiana di Geotecnica*, anno XXXVIII, n. 3
- Simpson B., Driscoll R. (1998) *Eurocode 7 – a commentary*, BRE Arup
- Soubra, A. H. (2000) Static and seismic passive earth pressure coefficients on rigid retaining structures - *Can. Geotech. Journal*. Vol. 37, pp. 463–478
- Steedman, R. S. (1998) Seismic design of retaining walls, *Geotechnical Engineering*, Vol. 131, Jan. , pp. 12-22
- Steedman, R. S. & Zeng, X. (1990) The influence of phase on the calculation of pseudo-static earth pressure on a retaining wall, *Géotechnique*, Vol. 40, No. 1, pp. 103-112
- Subba Rao K. S. and Choudhury D. (2005) Seismic Passive Earth Pressures in Soils, *Journal of geotechnical and Geoenvironmental Engineering*, ASCE, Vol. 131, No.1, pp. 131-135.
- Towhata I. and Islam M. S. (1987), Prediction of lateral displacement of anchored bulkheads induced by seismic liquefaction *Soils and Foundations* , Vol. 27, No. 4 , pp. 137-147.
- Transit New Zealand (2003), *Bridge Manual*, 2nd ed. – SP/M/022 - <http://www.transit.govt.nz/technical/>
- USACE (1989) Engineer Manual EM 1110-2-2502 *Retaining And Flood Walls*, Washington, D. C., USA: <http://www.usace.army.mil/publications/eng-manuals/cecw.htm>
- Veletsos AS, Younan AH., (1994a) Dynamic soil pressures on rigid vertical walls. *Earthquake engineering and structural dynamics*. vol. 23. New York, Wiley; pp. 275–301.
- Veletsos AS, Younan AH. ,(1994b) Dynamic modeling and response of soil-wall systems. *ASCE J Geotech Eng*, 120 (12), pp. 2155–79.
- Veletsos AS, Younan AH., (1997) Dynamic response of cantilever retaining walls. *ASCE J Geotech Geoenviron Eng*, 123 (2), pp. 161–172.
- Vogt, N., Schuppener, B., Weißenbach, A., (2007), “Gli approcci di progetto dell’EC7-1 per la progettazione geotecnica in Germania”, *Rivista Italiana di Geotecnica*, Anno XLI, n. 1, pp. 53–60.
- Westergaard, H. M. (1933) ,“Water pressures on dams during earthquakes“ *Transactions ASCE*, paper no. 1835, pp. 418-472,
- Whitman, R. V. and Liao, S. (1985), Seismic design of retaining walls, *Miscellaneous Paper GL-85-1*, U.S. Army Engineer Waterways Experiment Station, Vicksburg, Mississippi.
- Wood, J. H. (1973). “Earthquake Induced Soil Pressures on Structures,” Doctoral Dissertation, EERL 73-05, California Institute of Technology, Pasadena, CA <http://caltecheerl.library.caltech.edu/>
- Wu, G. and Finn, W.D.L., (1999), Seismic lateral pressures for design of rigid walls. *Canadian Geotechnical Journal*, 36, pp. 509 - 522.
- Zeng, X. (2005), Effect of Liquefaction on Stability of Retaining Walls, ASCE Geotechnical Special Publication GSP 133 Earthquake Engineering and Soil Dynamics
- Zeng, X. & Steedman, R. S. (1993) On the behaviour of quay walls in earthquakes, *Géotechnique* Vol. 43, No. 3, pp. 417-431